

F2F COM Meeting Leuven

How to live in Leuven

Table of contents

Transport to Leuven	2
By plane.....	2
By train	2
Transport inside Leuven	2
By bus	2
By taxi	2
By bike	2
Accommodation	3
Food.....	4
Drinks.....	4
Top 5 places to visit	4
Fun facts	4
Emergency contacts	4

Transport to Leuven

By plane

Flying to Brussels National Airport (28 km from Leuven): Leuven is located approximately 20-25 minutes' drive from the Belgian National Airport of Zaventem. The airport has its own train station (Brussels National Airport), with direct trains to Leuven. The station is underneath the airport and can be accessed via lifts and escalators in the arrivals hall. The train ride from Brussels airport to Leuven takes about 25 minutes. From the Leuven train station, it is 2 km to the event's venue and diner location.

Flying to Brussels South Charleroi Airport (90 km from Leuven): Brussels Charleroi South airport is a 1-hour drive from Leuven. If you land here, you can take the bus to Charleroi railway station, and take a train from there to Leuven. Several car hire companies also operate from Charleroi Airport.

By train

Leuven is easy to reach by train from all Belgian and European cities. It is a 20-minute train ride from Brussels, and 45 minutes from Antwerp.

The train journey from Leuven to Brussels South Station (Eurostar / Thalys) lasts 30 minutes

Transport inside Leuven

By bus

To go to the office from the centre and visa-versa via bus is best done with line 2 direction Heverlee (to the centre is direction Kessel-lo). The last stop of this bus stop is closest to the EIT Food office. This will require a 10min walk from bus stop to office through the campus of the KULeuven. **Price: 3€**

By taxi

Taxi Jenny is my favourite, they have a good dispatch and provide alternatives if they are not available at the moment: +32 016 26 10 10 **Price: 10 – 15€** (travel between centre and office)

By bike

Leuven is the city of bikes! Renting a bike can be done very easily by simply walking in at the address below (5min walk from train station). **Price: 24€ / week**

Fietspunt Leuven station

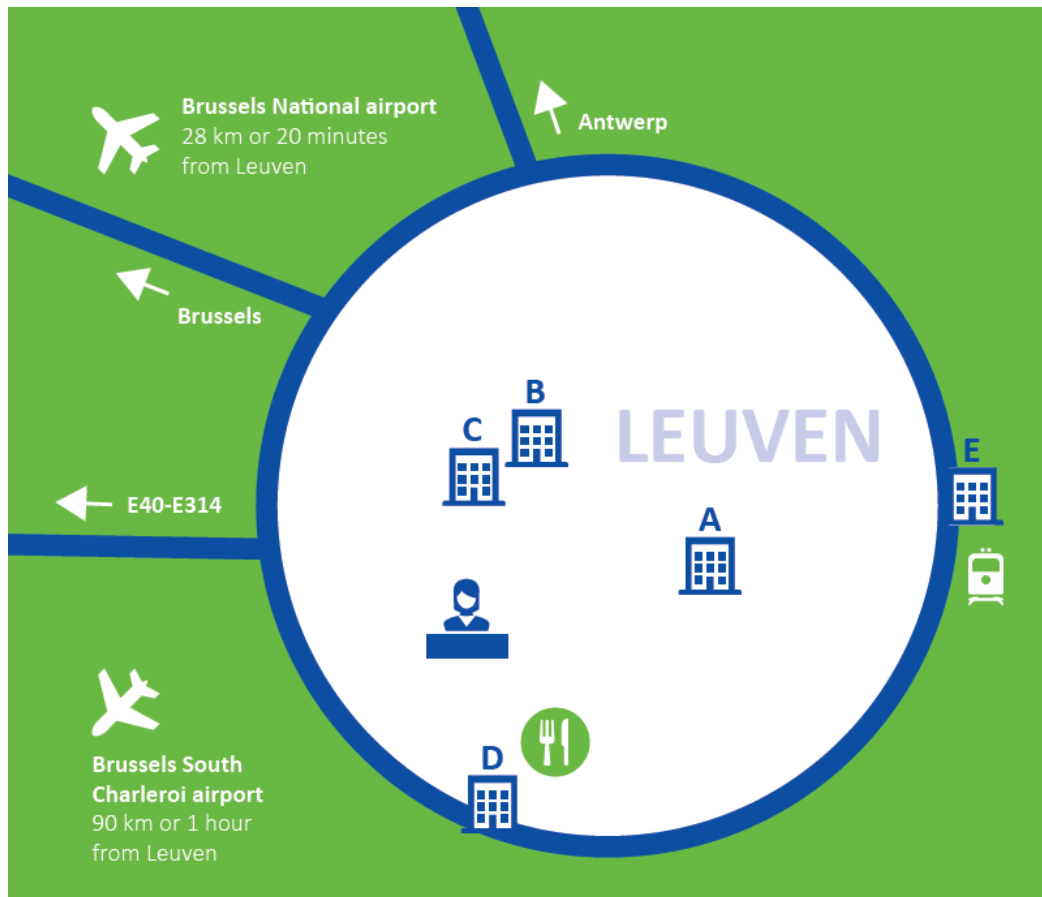
Prof. Roger Van Overstraetenplein 1/001

Tel: 016 21 26 01

Note: this is in an underground garage

Jente Schoutens (+32 484 72 48 14)

Accommodation



MEETING PREMISES:

Leuven Institute for Ireland in Europe (Janseniusstraat 1)



HOTELS IN LEUVEN:

- A Pentahotel Leuven (Alfons Smetsplein 7)
- B Ibis Leuven Centrum (Brusselsestraat 52)
- C Martin's Klooster (Onze Lieve Vrouwstraat 18)
- D Begijnhof Congreshotel (Tervuursevest 70)
- E Ibis Budget (Martelarenlaan 10)

Note: ignore the meeting premises; this map is based on an event we did earlier.

Note2: check with Saskia the hotel prices, I am not the one to decide on this

The Lodge hotel is also a good option since it is closest to the office

<http://www.lodge-hotels.be/nl/hotels/b/the-lodge-heverlee-1>

Food

Muntstraat is by far the best street in Leuven for low and medium priced restaurants:
<http://www.muntstraat.be/content/home.html> => Sushi, burgers, Italian, Indian, ...

If you are feeling lazy: Deliveroo and Uber Eats are a big thing here
Hit me up if you have a more specific request

Drinks

Oude Markt Leuven (pick one of the +20 bars)
STUK Café is the hipster / intellectual place to go
OPEK is located at a mini-harbour inside Leuven and is for the arty people

Top 5 places to visit

- ✓ Town Hall of Leuven (very close to the oude markt)
- ✓ Groot Begijnhof (ancient village within Leuven)
- ✓ Botanical Garden (free entrance, nearby centre of Leuven)
- ✓ Arenberg Caste (close to the office, also very nice surroundings with forest and sport facilities)
- ✓ M-Museum (if you are into modern and classical art, this is your place to be)

Fun facts

- Use your little finger pointing up to order a beer without saying a word
- KU Leuven is most innovative university of Leuven 3 years in a row (Reuters scale)
- Leuven has 100K citizens, but the vast majority are students
- Leuven is the offspring and EU HQ of AB Inbev, the largest beer manufacturer in the world
- EIT Raw Materials office is located close to the Vaart (10min from Trainstation)

Emergency contacts

I don't want to worry you, Leuven is a very safe city. But just in case:

European emergency number: 112

Card Stop: 070 34 43 44

Police: 101

And my number is in the footer of each page 😊

Jente Schoutens (+32 484 72 48 14)